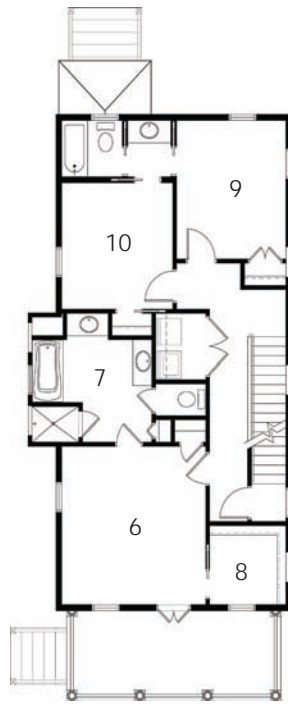
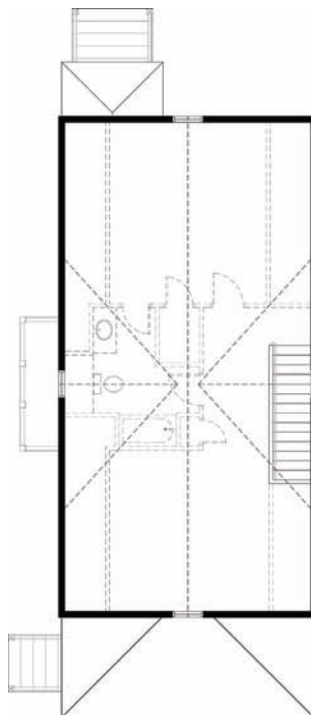




first floor



second floor



future third floor

**first floor**

- 1- eat-in kitchen 17'-4" x 14'-4"
- 2- foyer
- 3- dining 14'-8" x 12'-4"
- 4- living 21'-6" x 15'-4"
- 5- front porch 20'-6" x 8'

**second floor**

- 6- m. bed. 13'-10" x 14'
- 7- m. bath
- 8- m. closet 7'-4" x 7'
- 9- bedrm 1 10'-6" x 12'-3"
- 10- bedrm 2 10'-8" x 11'-2"

Disclaimer: All dimensions and square footages are approximate and do not include exterior stairs. All rights in and to these drawings are owned by High Tide Design Group. These drawings are representative and are NOT FOR CONSTRUCTION.



**HIGH / TIDE DESIGN GROUP**  
 825 Low Country Blvd, Suite 205  
 Mount Pleasant, SC 29464  
 www.hightidedesigngroup.com  
 843.856.7333

3 Bedroom, 2.5 Bath, Future 3rd Floor  
 1st Floor = 1,015 sqft  
 2nd Floor = 1,015 sqft  
 Total = **2,030 sqft**

25'-2"W x 55'-8"L

Plan #: **02-001-0**